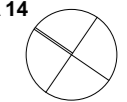
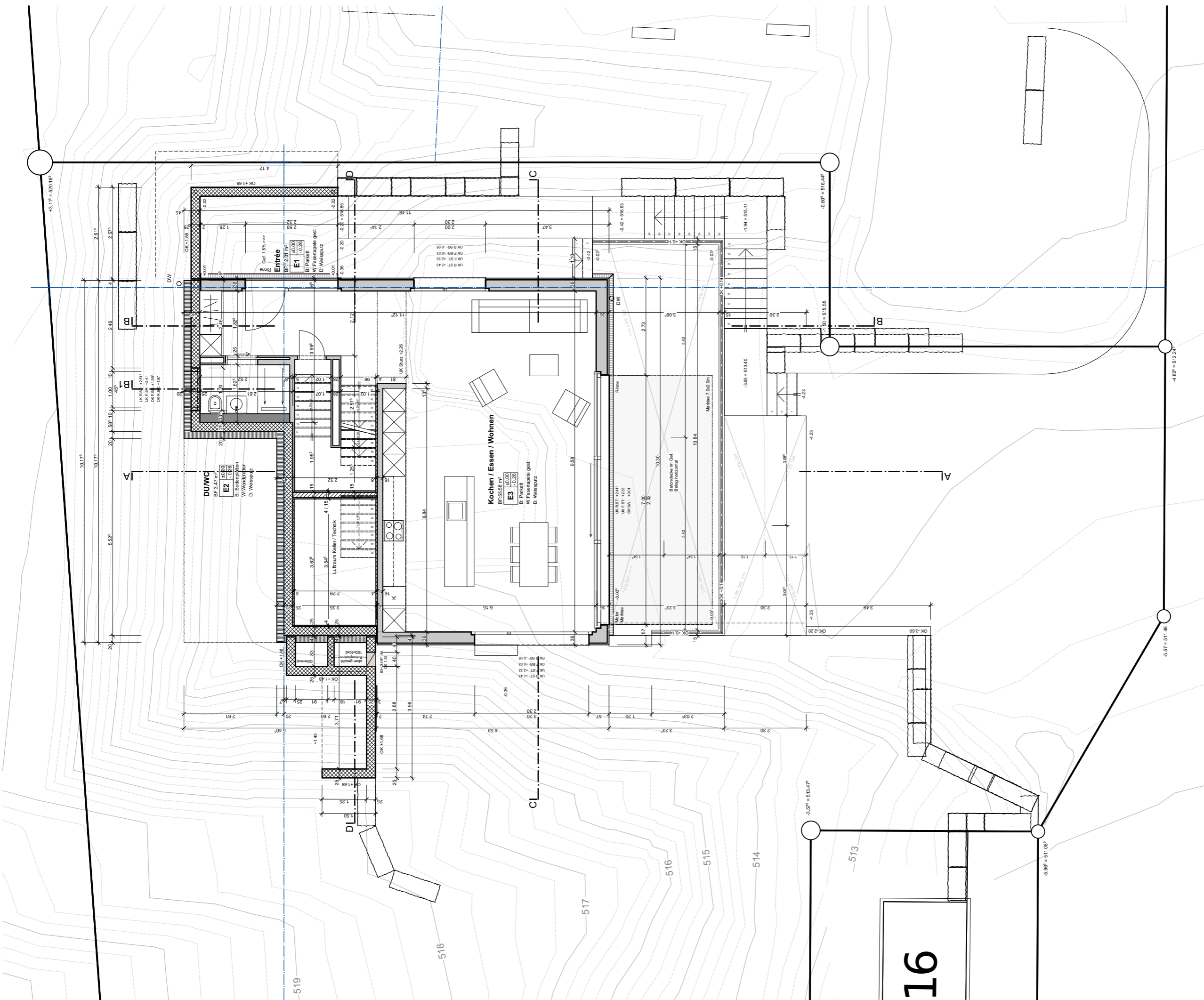


RENGGLI AG
St. Georgstrasse 2 041 925 25 25
CH-6210 Sursee 041 925 25 26

1151061 Walterswil Haus A 14
5746 Walterswil SO
Plan Nr. A14 REV 01, A3
18.09.2017 dho, REV

Untergeschoss 1:100





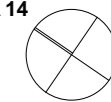
16

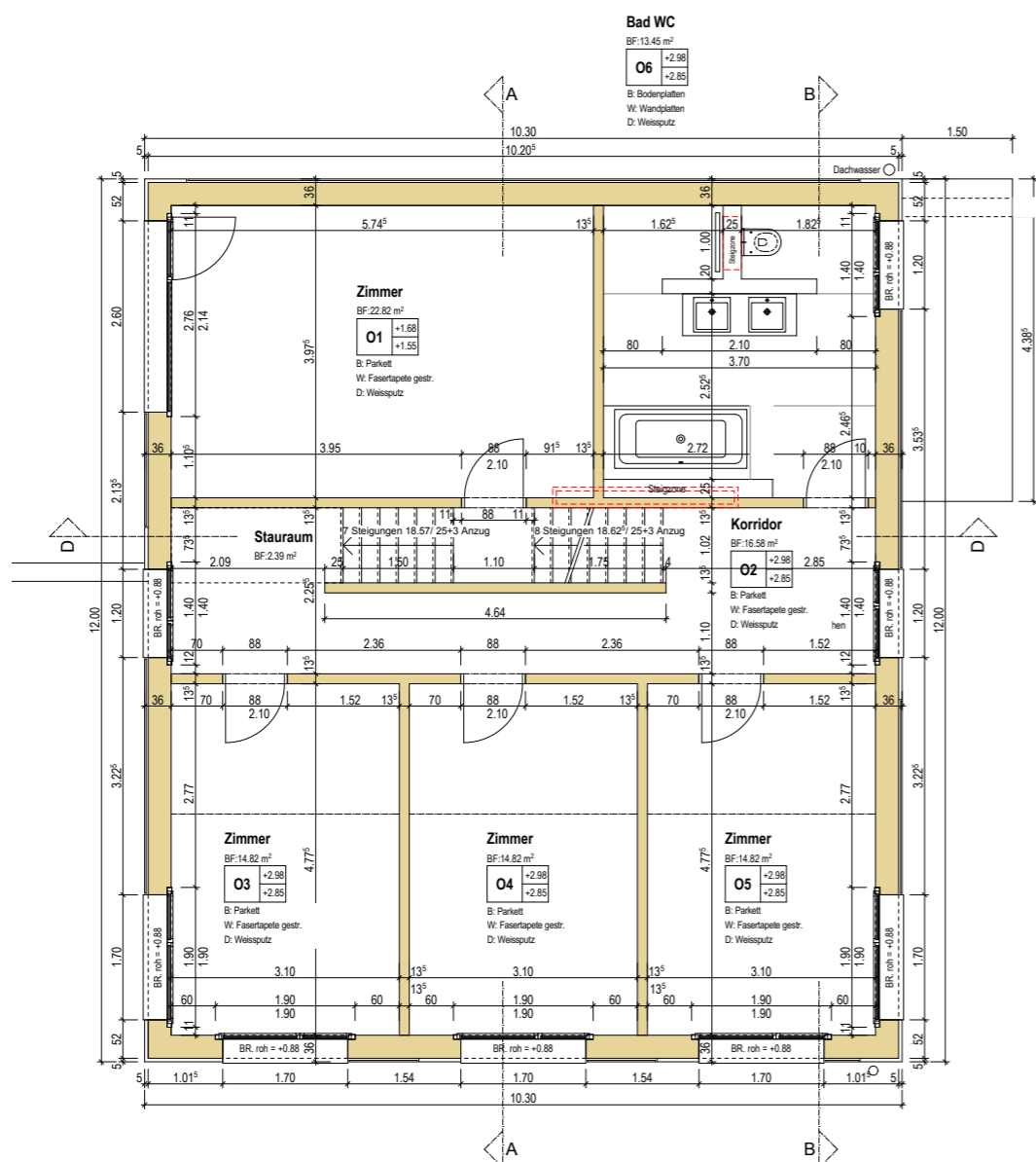
RENGGLI AG
 St. Georgstrasse 2 041 925 25 25
 CH-6210 Sursee 041 925 25 26

1151061 Walterswil Haus A 14
 5746 Walterswil SO
 Plan Nr. A14 REV 02, A3
 18.09.2017 dho, REV

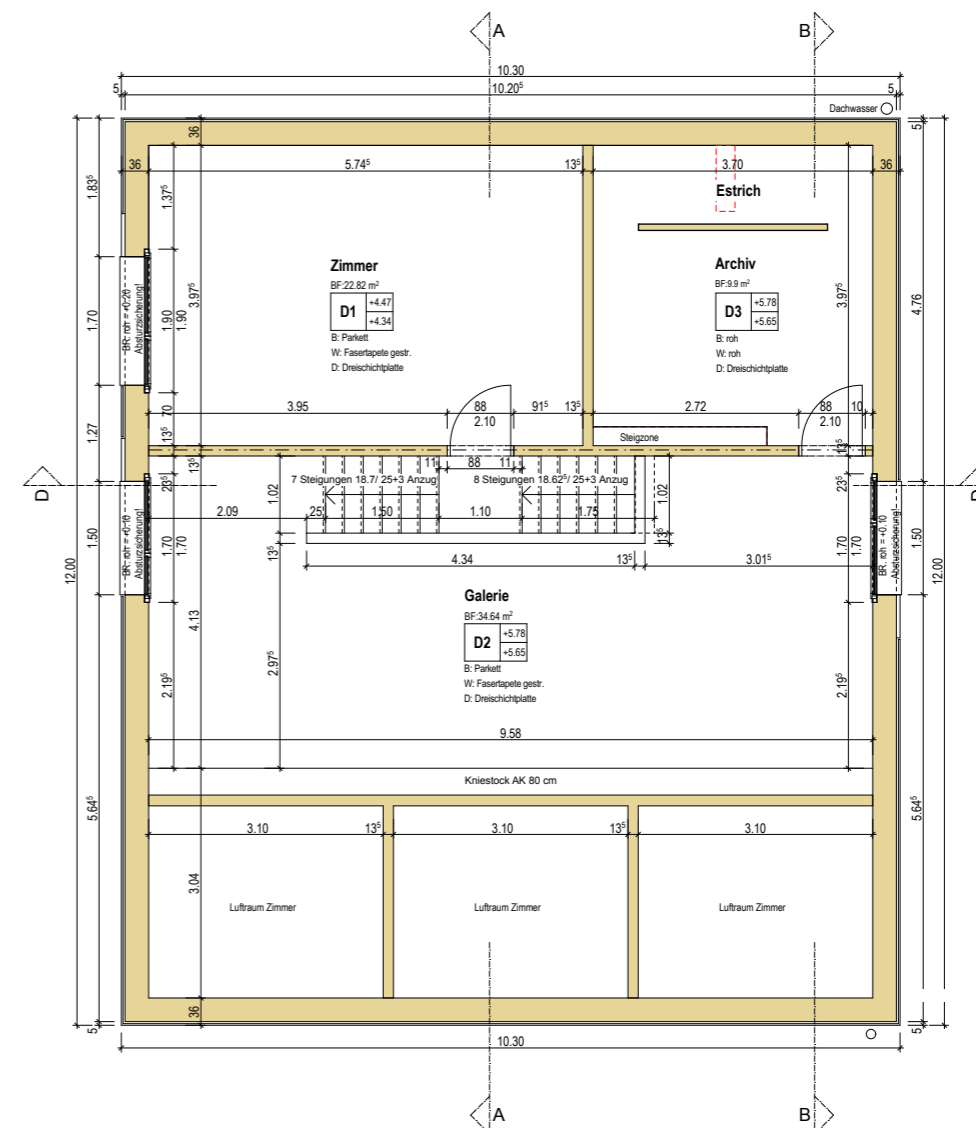
Erdgeschoss

1:100





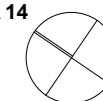
Obergeschoss



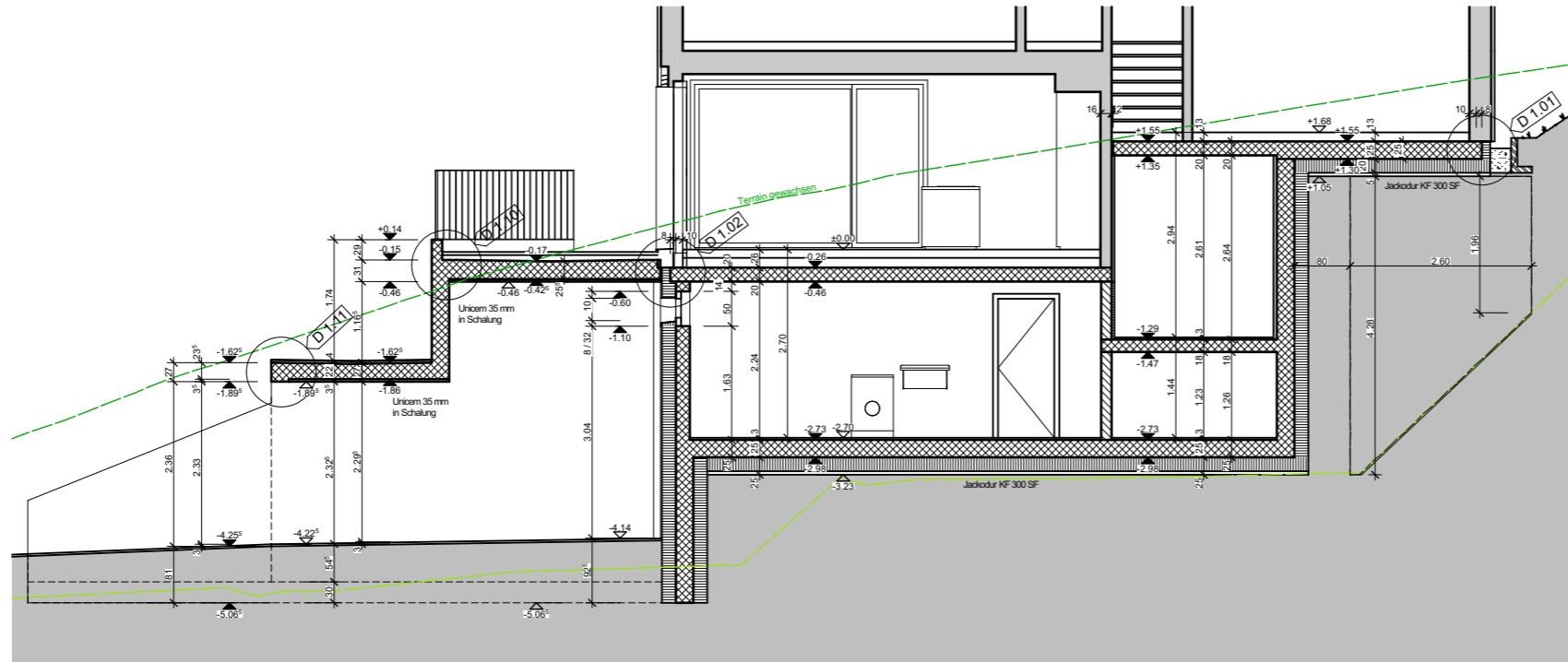
Dachgeschoss

RENGGLI AG
St. Georgstrasse 2 041 925 25 25
CH-6210 Sursee 041 925 25 26

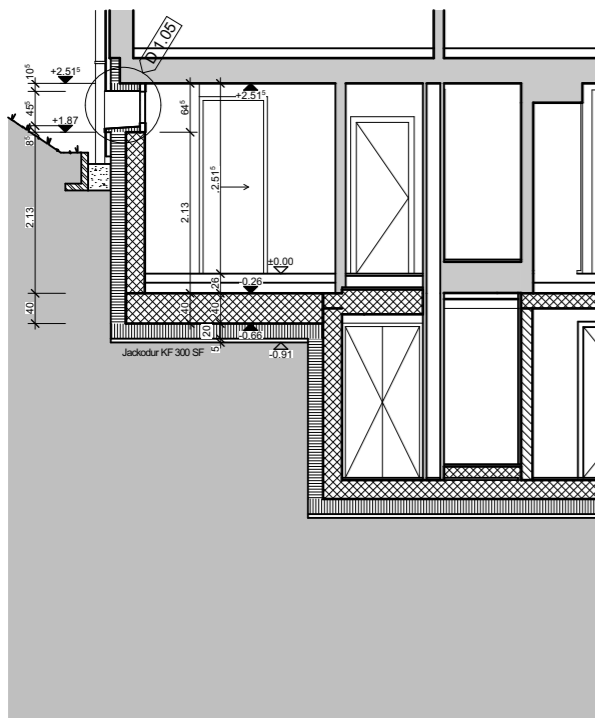
1151061 Walterswil Haus A 14
5746 Walterswil SO
Plan Nr. A14 REV 03, A3
18.09.2017 dho, REV



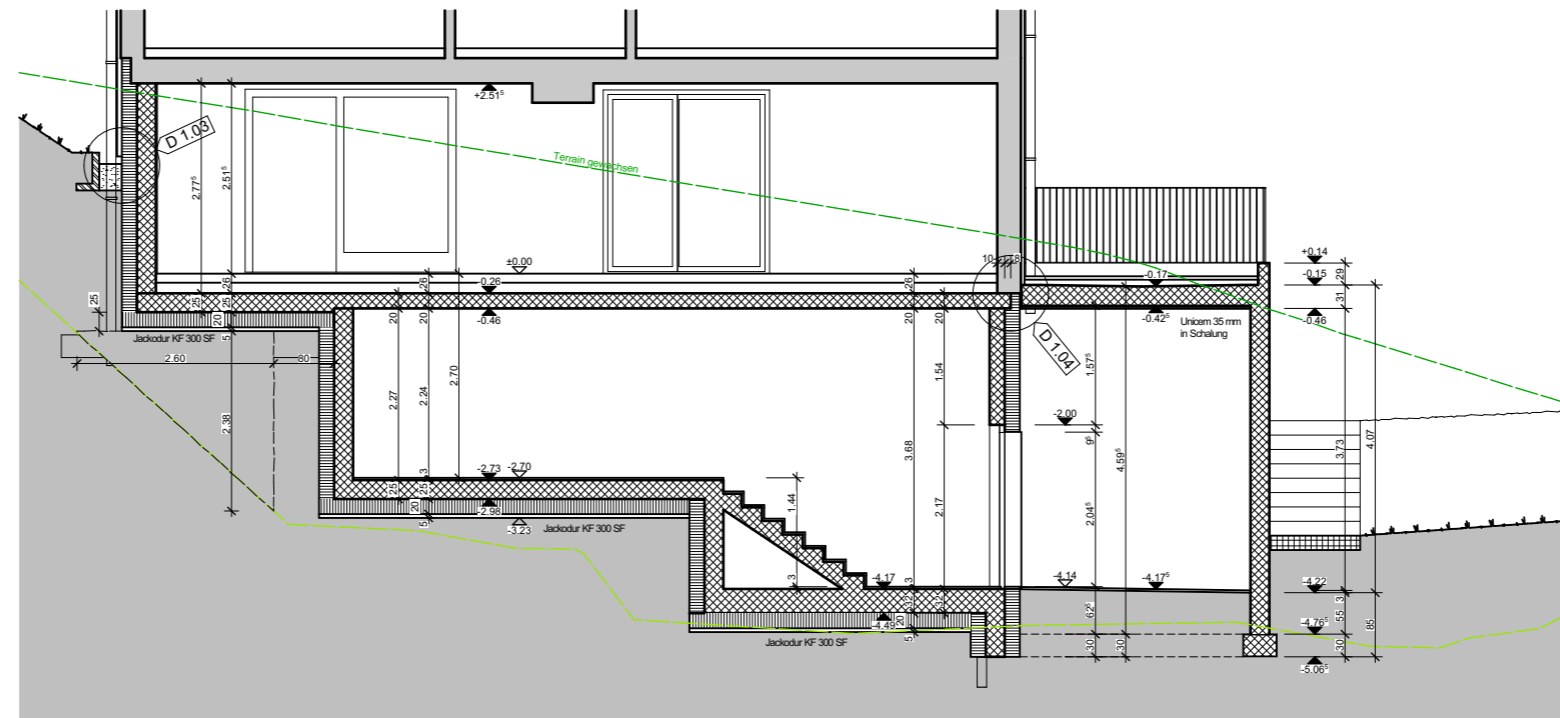
Obergeschosse Holzbau 1:100



Schnitt A



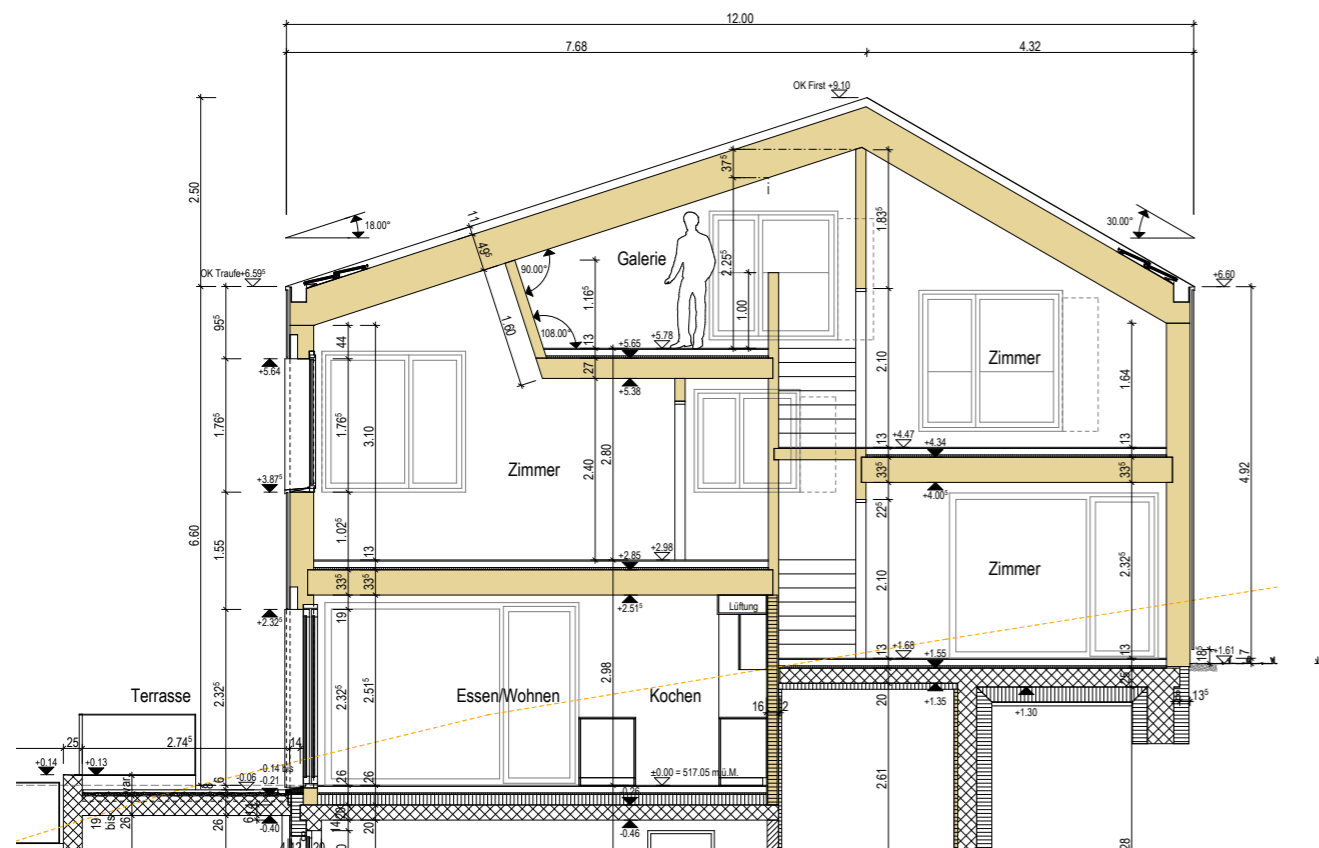
Schnitt B1



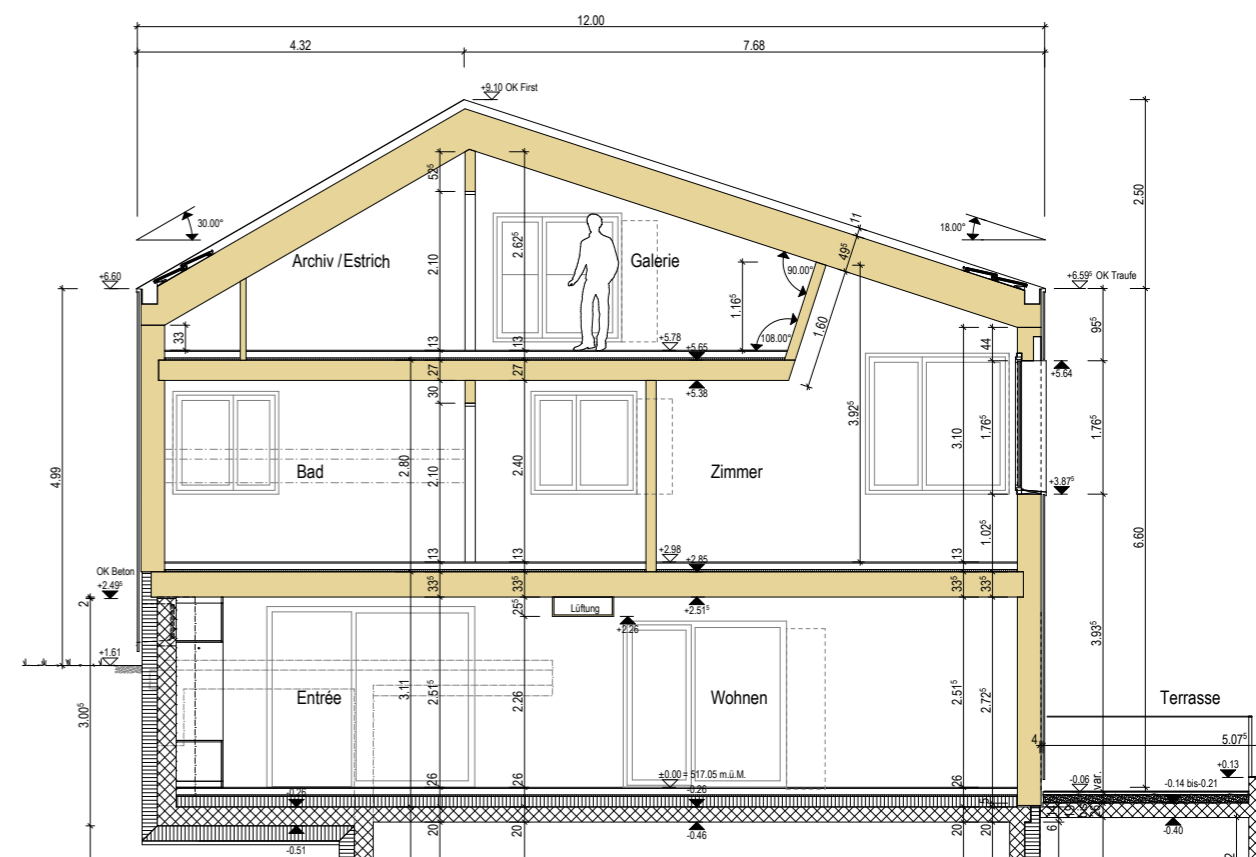
Schnitt B

RENGGLI AG
 St. Georgstrasse 2 041 925 25 25
 CH-6210 Sursee 041 925 25 26

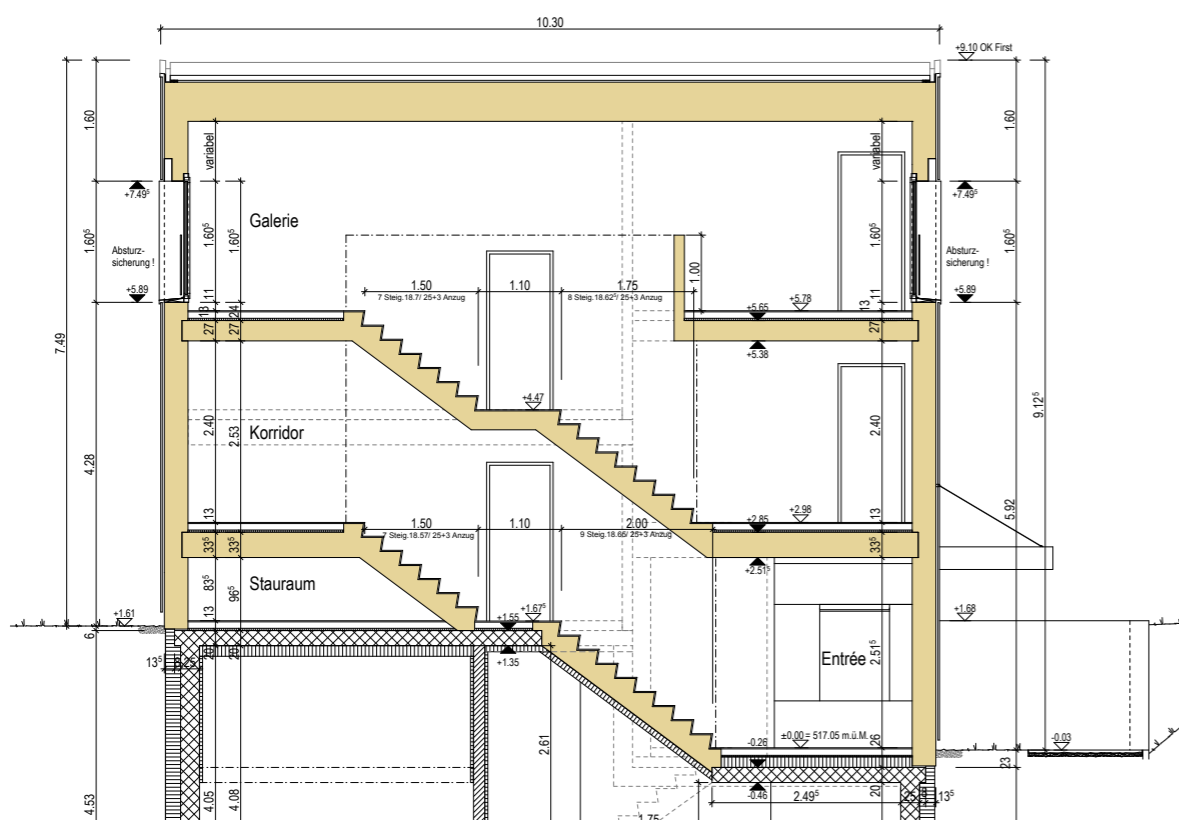
1151061 Walterswil Haus A 14
 5746 Walterswil SO
 Plan Nr. A14 REV 04, A3
 18.09.2017 dho, REV



Schnitt A-A



Schnitt B-B



Schnitt D-D

RENGGLI AG
 St. Georgstrasse 2 041 925 25 25
 CH-6210 Sursee 041 925 25 26

1151061 Walterswil Haus A 14
 5746 Walterswil SO
 Plan Nr. A14 REV 06, A3
 18.09.2017 dho, REV

